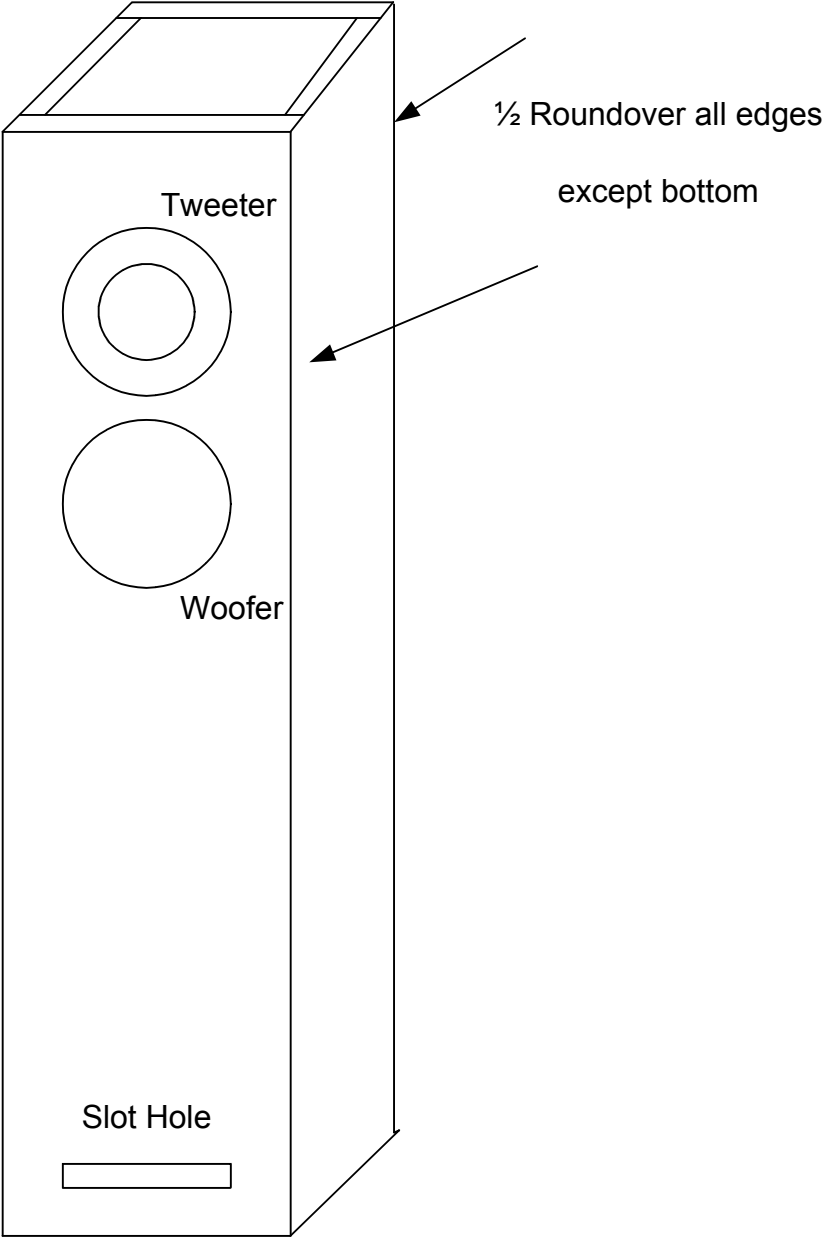
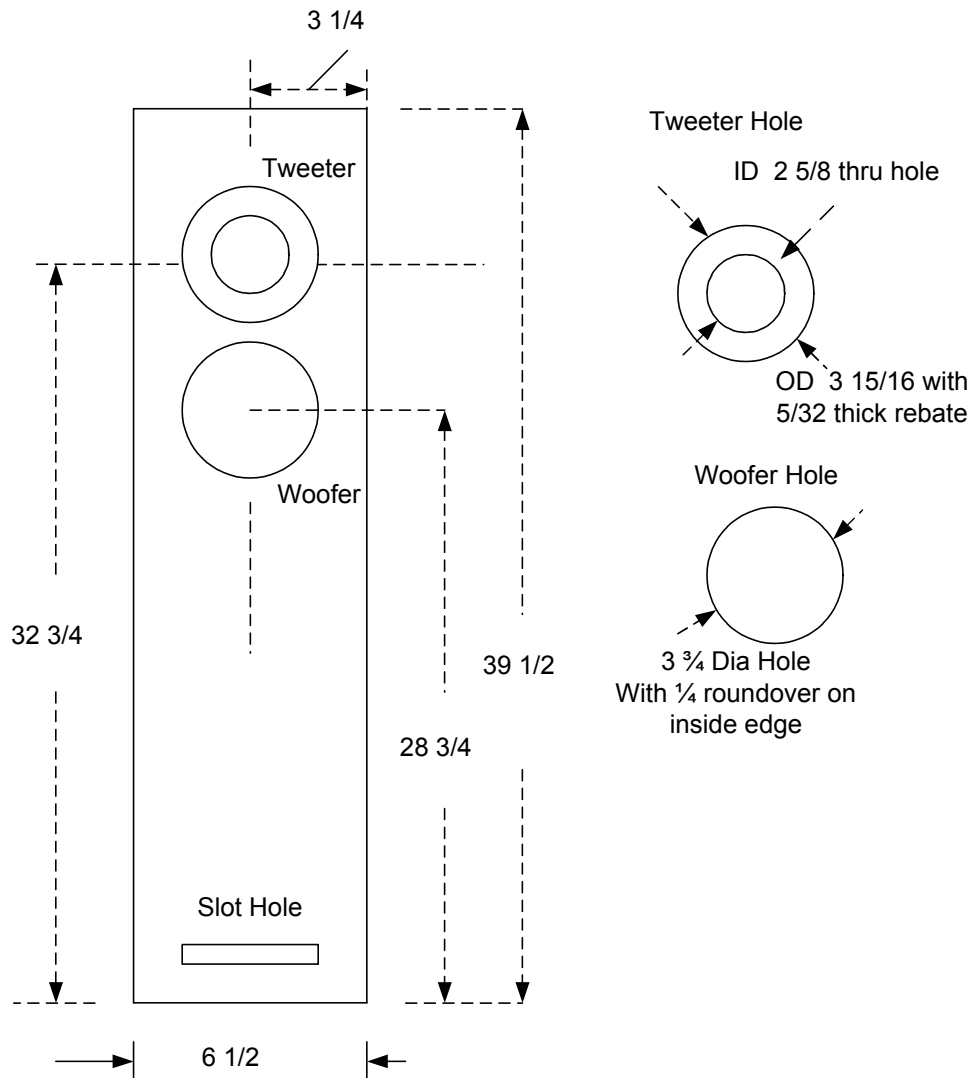


Overall Assembly



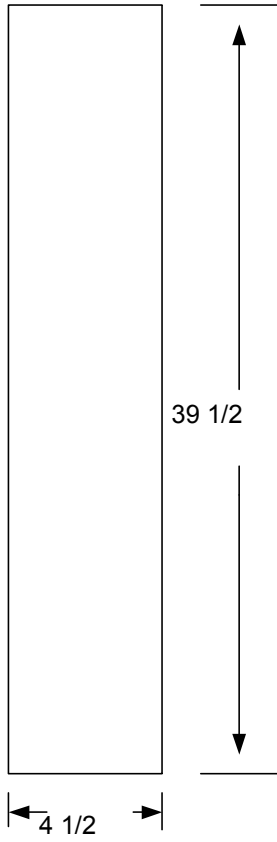
Front Baffle



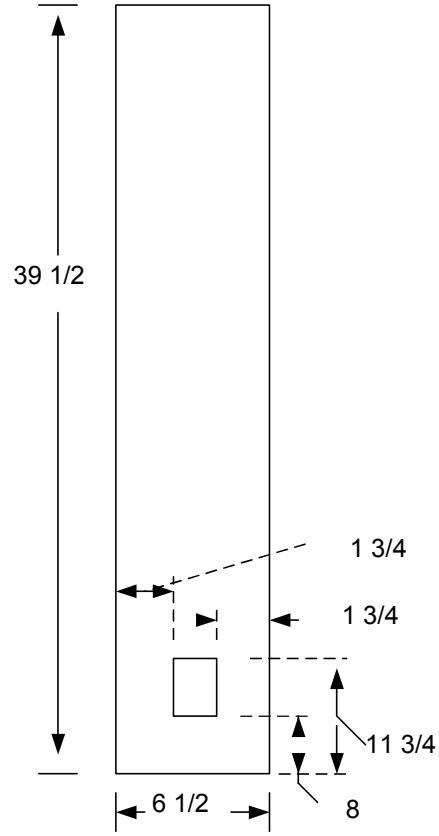
Notes

1. Dimensions in inches
2. Slot Hole details on separate sheet
3. Material is $\frac{3}{4}$ inch thick MDF

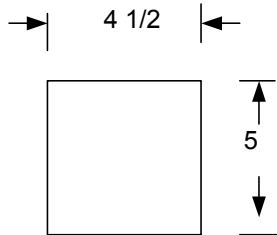
Side Panels



Rear Panel

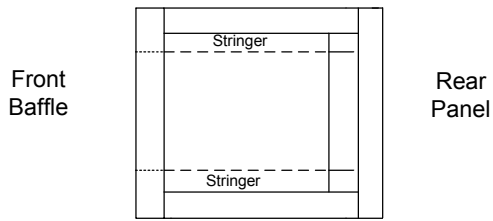
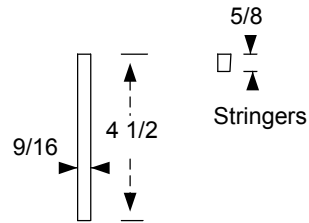
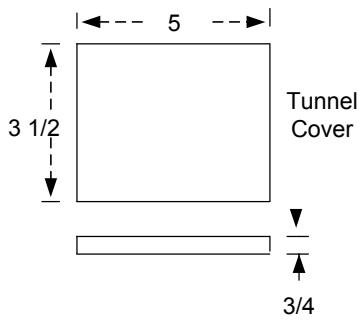
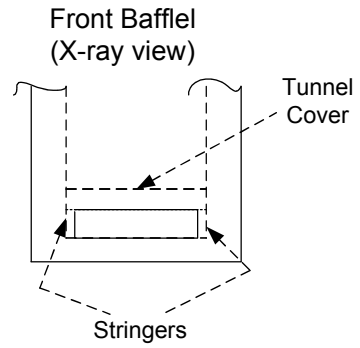
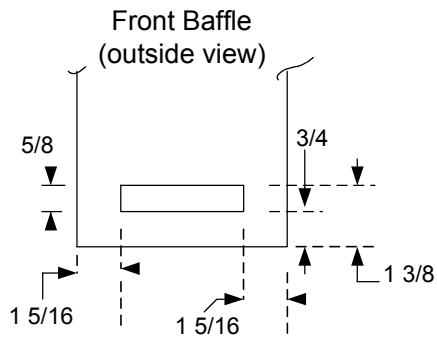


Madisound
TD cup
Terminal
Plate



Top and Bottom
Panels

Slot Hole Details



Inside Box Assembly (top down view)

Note the gap in the tunnel cover to the rear panel